

weekend scene



Discs and sabers: The Bally Midway "Discs of Tron" (left) and Atari's "Star Wars" arcade games.

Shoot, hack, slash, punch, kick and power-up at the Miraikan

Game On, a globe-trotting traveling video-gaming showcase that has already racked up 2 million visitors, is finally reaching Tokyo. Aimed at all ages, "Game On" features everything from retroclassics — including "Pacman," "Space Invaders" and "Mario Bros." — to the latest releases of "Metal Gear Solid" "Minecraft" and "Gran Turismo Sport."

Most of the games can be played at the venue, with the show's highlight being the new 360-degree virtual reality PlayStation VR headset, which will be officially released later this year.

Perhaps just as much a draw to gaming aficionados will be the selection of rare vintage arcade games on display, including Nutting Associates' 1971 "Computer Space" machine, developed by Nolan Bushnell and Ted Dabney, who went on to found Atari in 1972. (Daisuke Kikuchi)

Game On takes place at The National Museum of Emerging Science and Innovation (Miraikan), from March 2 to May 30; 10 a.m.-5 p.m. Closed Tue. ¥1,500. <http://gameon.tokyo>

Cast your net over Tokyo's fish festival

You don't have to be a seafarer to join the Japan Fisherman's Festival. Anyone with a love of seafood should enjoy this event, which is being held in collaboration with the Fish-1 Grand-Prix cuisine competition.

This four-day festival brings together around 40 restaurants and a variety of *wa-yō-chū-style* (Japanese, Western and Chinese cuisine) style fish dishes, including *onabe-furumai* (hot pot treats). Visitors are invited to sample dishes, many of which will have been prepared by first-class chefs, and vote for their favorites for two competitions — the Pride Fish Cooking Contest and the Made in Japan Fast-Fish-Products Contest. The final rounds will take place on March 6, with the winners announced at the event finale. Other entertainment includes stage performances and presentations, while those wanting to take home a catch will find booths selling local marine products from across Japan.

Japan Fisherman's Festival 2016 with Fish-1 Grand-Prix takes place at Hibiya Park; March 3-6; hours vary depending on dates. Entry is ¥500, prices of dishes vary. Japan Fisherman's Festival, www.jff.jp; Fish-1 Grand-prix, www.pride-fish.jp/F1GP



Rika Shimasaki's "Mousouzoku: A Woman" (partial image)

Have a 'Blossom Blast' on women's day

Around the world, female artists are statistically fewer in number and paid less than their male counterparts. With Japan being no exception, "Blossom Blast" aims to celebrate International Women's Day on March 8 by raising awareness of women in the arts through a showcase of Japanese talent.

Organized by the artist collective Tokyodex, this exhibition of works created exclusively by up-and-coming and established women artists is curated by the artist Miki Saito, whose own paintings and sculptures have been exhibited in the U.S. and Japan. The collection includes drawings by Makopuri, whose anime-esque pieces have been shown the Mori Art Museum, and Pokke104, whose colorful nature-inspired illustrations have been featured in web design and murals. (Drew Bateman)

"Blossom Blast: An Exhibition of Works by Emerging Female Artists in Japan" is free to view and runs March 1-16 at the UltraSuperNew Gallery, a six-minute walk from Harajuku Station; daily 10 a.m.-7 p.m. <http://gallery.ultrasupernew.com>

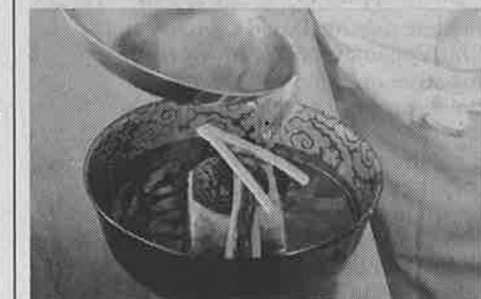
Traditional dishes in the old capital

The 2013 designation of *washoku* (Japanese cuisine) as a UNESCO Intangible Cultural Heritage helped put Japanese dishes under the spotlight, with events such as the food-oriented Japan Pavilion at Milan Expo 2015 sparking even more interest. So why not celebrate it in its home county with the Kyoto Washoku Festival, which is offering visitors a wide range of dishes, including some home-cooked versions and desserts.

On the menu will be *daikon-daki* (simmered mooli radish), *kasujiru* (soup made with sake lees), many other traditional foods and a variety of local Kyoto specialties.

For those wanting to learn more about what they are eating, a symposium with young chefs will be held, as well as *matcha* (green tea) workshops, a *bento* (boxed meals) exhibition and free dashi broth tastings. (Yuki Yamauchi)

Kyoto Washoku Festival takes place at Yasaka Kurabu theater in the Gion Kōbu Kabu-tenjo theater, a 10-minute walk from Gion-Shijo Station, on Feb. 28; 10 a.m.-4 p.m. Entry is free, though dishes and some attractions require a fee. <http://washoku-kyoto.jp>



© KANSAI COLLECTION

Young fashion takes hold of Osaka

Though Tokyo is always considered to be Japan's fashion center, the Kansai region is often regarded as having its own unique sense of style, and its biannual Kansai Collection — aimed at the younger generation of women — attracts tens of thousands of visitors every year. The event hosts numerous stalls selling popular brand goods, but its main draw is the runway shows featuring current trends and stage performances by celebrity models, who this year include Mariya Nishiuchi and Elaiza Ikeda.

If you're a fan of the fashion magazine ViVi, one of the event's collaborators, this is an opportunity to see some of its most popular models. If you're really lucky you could even get your photo taken with Alissa Yagi and Tina Tamashiro at a booth set up specially for the occasion.

Other attractions include hair-styling and manicure services, as well as a number of food stalls. (Yuki Yamauchi)

Kansai Collection 2016 Spring & Summer takes place at Kyocera Dome Osaka on Feb. 28; 2:30-8:30 p.m. Tickets range from ¥3,500 to ¥8,000. www.kansai-collection.net

hotels & restaurants

Viewing spring cherry blossoms



To allow guests to enjoy Tokyo's cherry blossoms, the Hotel Century Southern Tower is offering a spring accommodation plan. This plan, which runs from March 1 to April 30, is good for families, as well as business travelers, interested in cherry blossom viewing.

Guests can choose one of three gifts when checking-in. One choice is beer or plum wine and snacks to enjoy while cherry blossom viewing.

Another is a large three-way pouch

to finish the night with mouth-watering desserts such as soft-serve ice cream, no-bake cheesecakes, Yubari melon *panna cotta* cream dessert, caramel pudding and many others.

The buffet runs through March 31 from 6 p.m. to 9:30 p.m. on weekdays (5 p.m. to 7 p.m. and 7:30 p.m. to 9:30 p.m. on weekends) and costs ¥6,090 per person on weekdays (¥6,680 on weekends). Guests 65 or older will be charged ¥4,990 (¥5,500 on weekends) and children from age four to eight ¥3,400 (¥3,600 on weekends).



Samurai Sword & Helmet
<http://www.japansword.co.jp/>
Japan Sword Tel.: 03-3434-4321
 Fax: 03-3434-4324

**RENOWNED IN JAPANESE & INDIAN
 MADE SAREES & TEXTILES**
30%~50% OFF
ROKKO SAREES
 TOKYO (Ebisu Stn. East Exit)
 Pinecrest 107, 1-7-3, Hiroo, Shibuya-ku, Tokyo
 Tel: 03-3400-6887 Fax: 03-3400-6889 Mobile: 090-9848-4373
 Batra Insurance Agent for New India Assurance Co., Ltd.

THE TOLMAN COLLECTION
 2-2-18 Shiba Daimon, Minato-ku
 Contemporary Japanese Prints
 Exclusive limited editions www.tolmantokyo.com
 Internationally recognized artists Tel: (03) 3434-1300
 Open five days a week 11-7 (closed on Mondays & Tuesdays)

Matoba's Creations Everything in Pearls
 JEWELERS, PEARL DEALERS, EXPORTERS
MATOKA & CO., INC.
 TEL: (03) 3434-6900 MATOKA PEARLS SALON
 Open: 10:00-18:00
 Closed on Sundays E-1211 Shiroshima Trust Court, 4-3-2 Toranomon, Minato-ku, Tokyo 105-0001